



MONTHLY MEMBERSHIP PROGRESS REPORT

District 13 C

Results as of: 3/31/2016

GMT: Cindy Gregg

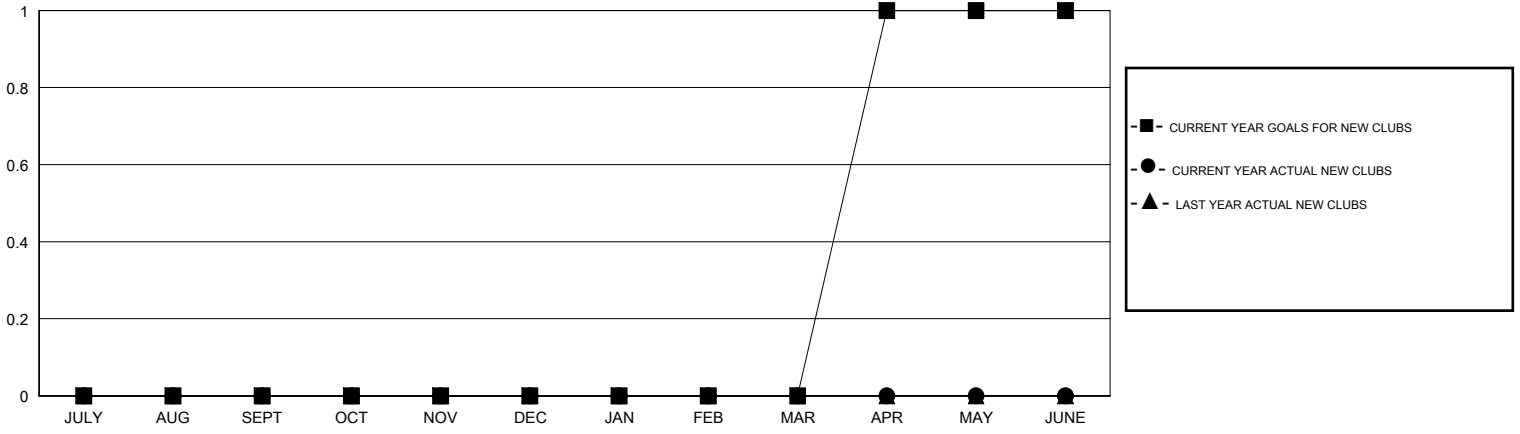
LOCATION OHIO

GMT CA 1

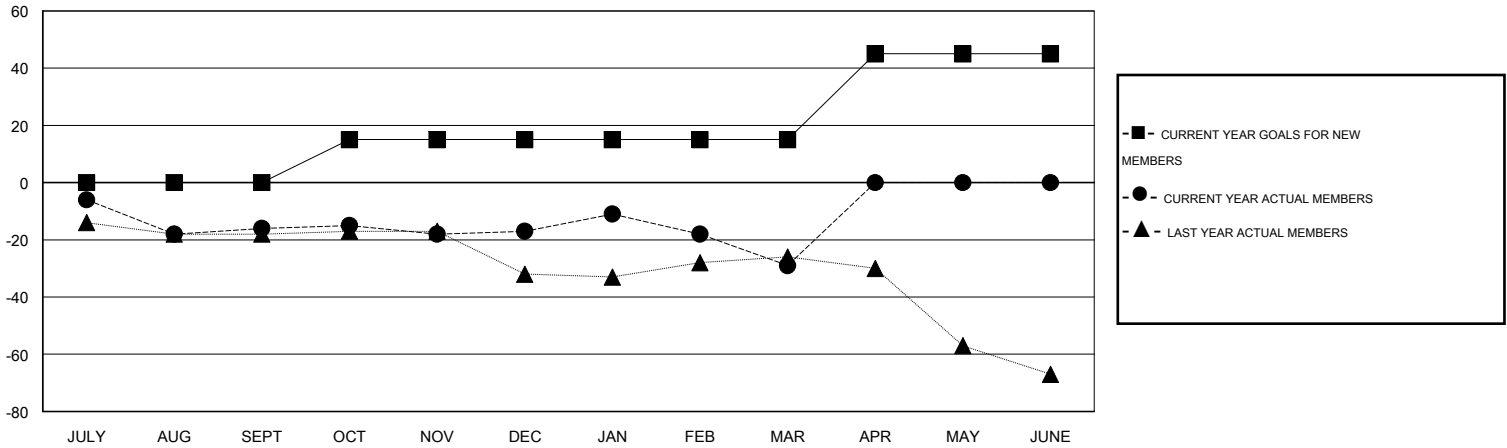
Clubs				
RESULTS FOR 2015-2016				
QUARTER	NEW CLUB GOAL	NEW CLUBS	DROPPED CLUBS	NET GAIN/LOSS
JULY/AUG/SEPT	0	0	0	0
OCT/NOV/DEC	0	0	0	0
JAN/FEB/MAR	0	0	0	0
APR/MAY/JUNE	1	0	0	0

Members				
RESULTS FOR 2015-2016				
QUARTER	NEW MEMBER GOAL	CHARTER AND NEW MEMBERS ADDED	DROPPED MEMBERS	NET GAIN/LOSS
JULY/AUG/SEPT	0	25	41	-16
OCT/NOV/DEC	15	15	16	-1
JAN/FEB/MAR	0	19	31	-12
APR/MAY/JUNE	30	0	0	0

GOALS AND ACTUAL NEW CLUBS CUMULATIVE



GOALS AND ACTUAL MEMBERS CUMULATIVE



DROPPED CLUBS: 0	
<u>DROPPED MEMBERS</u>	
DECEASED	14
CLUB CANCELLED	0
OTHER	74
TOTAL	88

21 CLUBS OF 35 ADDED 1 OR MORE NEW MEMBERS

[CLICK HERE FOR HEALTH ASSESSMENT DATA](#)

<u>GENDER DISTRIBUTION</u>	
MALE	598 (69.94%)
FEMALE	257 (30.06%)
<u>FAMILY UNIT MEMBERS</u>	
FAMILY UNIT MEMBERS	134
HEAD OF HOUSEHOLD	66
NON-HEAD OF HOUSEHOLD	68